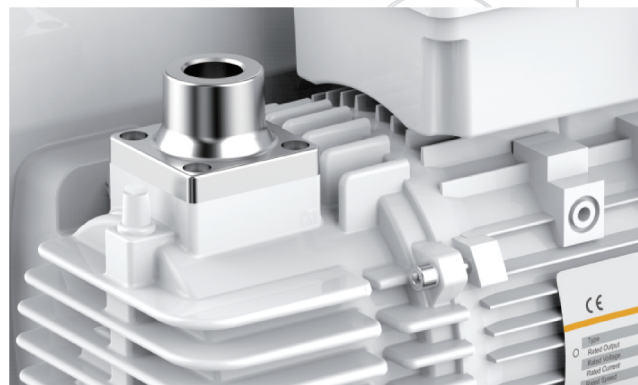
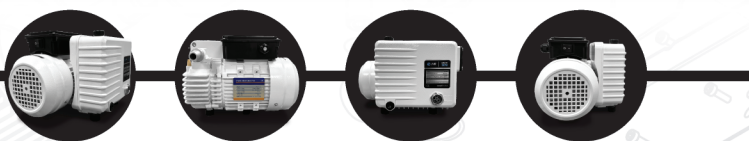


pumping speed: 24m³/h

SINGLE-STAGE ROTARY VANE VACUUM PUMP



MODEL **RVS20**



PRODUCT FEATURES

- **Excellent Performance**

Integrated pump structure with high precision engineering. Advanced vane technology delivers stable performance and ensures superior system reliability.

- **Excellent Heat Dissipation**

Air-cooled design eliminates the need for an external water-cooling system, reducing installation complexity and maintenance costs.

- **Clean & Green**

Features a high-quality built-in oil mist filter that efficiently captures oil mist, prevents pollution, and helps protect the environment.

- **FKM Seals**

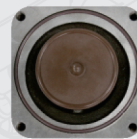
Enhances corrosion resistance and effectively prevents oil leakage for improved durability and reliability.

- **Anti-Suckback Structure**

Prevents oil contamination in the vacuum system after shutdown, helping maintain performance and extend system life.

- **Compact Structure**

Seamlessly integrated pump and motor for a lighter, more compact build. Its optimized size makes it ideal for a wide range of applications.



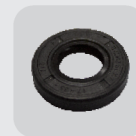
Anti-Suckback Valve



Vacuum Pump Exhaust Filter

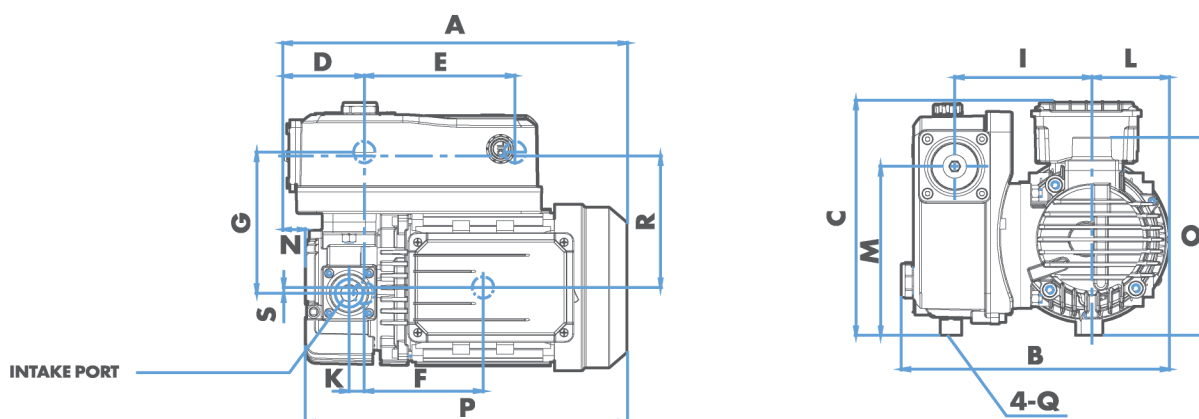


Gas Ballast Valve



Oil Seal

	UNIT	RVS20
Nominal Pumping Speed	cfm (m ³ /h)	14.1 (24)
Ultimate Pressure without Gas Ballast	Torr	
Ultimate Pressure with Gas Ballast I	Torr	≤ 1.5
Ultimate Pressure with Gas Ballast II	Torr	
Noise (Lw)	dB	≤ 65
Power Supply		1 PH
Nominal Motor Rating	hp	1.0
Motor Speed	rpm	3440
Oil Capacity	quarts	0.5
Protection Class		IP54
Inlet Thread		G1/2"
Approximate Weight	lbs	43
Dimensions (LxWxH)	in	12.5 x 9.8 x 8.6



MODEL	A	B	C	D	E	F	G	H	I	J	K	L	M	N	O	P	Q	R	S	INTAKE PORT	EXHAUST PORT
RVS20	318	249	219	75.5	140	110.5	131	/	127.5	/	14	72	157	21	184	299	M8	122.3	5.3	G1/2"	/