



ST-10

Hot Water Shrink Tank

Operation Manual

Version 6.9.1

1915 E. Acacia Street, Ontario, CA91761, U.S.A

TEL : 1-909-923-3888

FAX : 1-909-923-3588

<http://www.promarksvac.com>

S/N:

QC SIGNATURE:

INDEX

SAFETY RECOMMENDATION	1
1. APPLICATIONS	2
2. TRANSPORTATION INSTRUCTION	2
3. ST-10 SPECIFICATION	3
4. INSTALLATION	3
5. OPERATION	4
6. TROUBLESHOOTING	4
7. ELECTRICAL DIAGRAM	5
8. FABRICATION	7
8.1 BODY	7
8.2 WORKING BED DIAGRAM	10
8.3 OPERATOR BOX.....	12
8.4 ELECTRICAL BOX	14
8.5 CONTROL PANEL	16

SAFETY RECOMMENDATION

Certain Practices Or Minor Modifications On The Part Of The User May Increase The Risk Of Damage And/Or Accidents.

In The Interest Of Safe Installation, Handling And Maintenance, The Following Recommendations Should Be Strictly Followed:

- 1) Do not attempt to start or handle the machine until all safety topics, installation instructions, operator's guide and maintenance procedures have been fulfilled and understood.
- 2) All adjustments, repairs must only be carries out by qualified maintenance personnel, according to the instructions in this manual.
- 3) The operator must never insert hands, rags, etc, inside the machine while it is functioning.
- 4) Do not place tools, parts or other objects on or inside the machine.
- 5) Always keep the machine clean, oiled and in good working condition.
- 6) To provide continued protection against risk of electrical shock. Connect to properly grounded outlets only.
- 7) Always disconnect machine from power source (main power switch) as show on next page before removing service panel.

1. APPLICATIONS

Frozen food, sea food, prepared food, meat, soaked foods, products ... etc.

Recommendation of vacuum pouch – Vacuum shrink film must be applied.

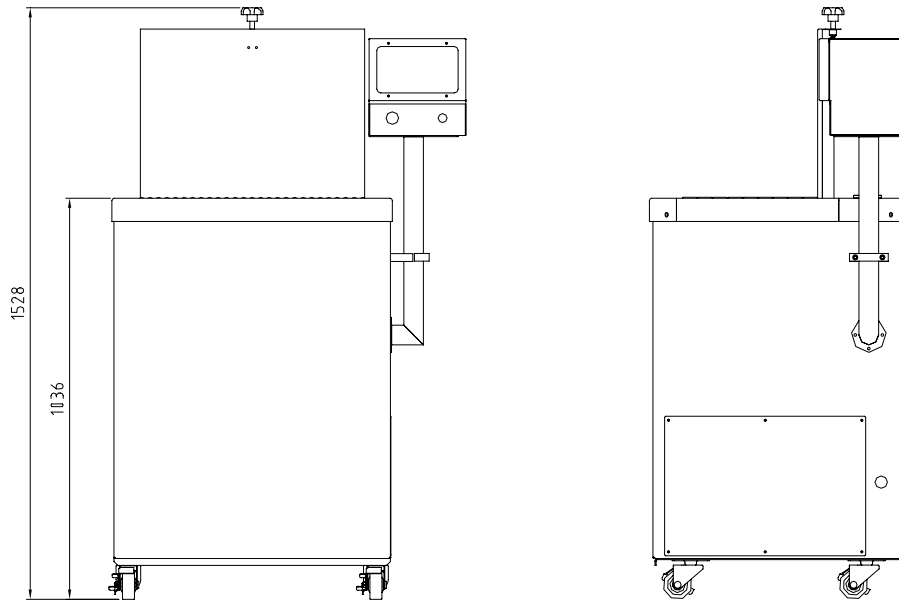
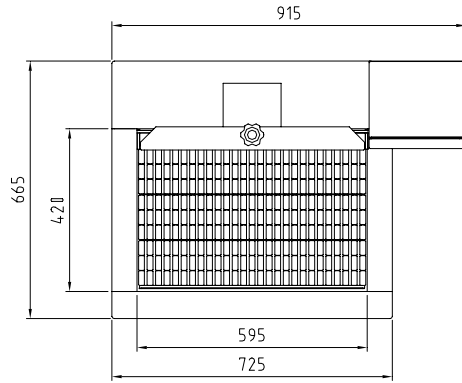
2. TRANSPORTATION INSTRUCTION

For the transportation and placing of this machine have a forklift truck available (keep in mind weight of the machine before lifting)

Precautions to take:

- Before lifting balance the machine by adjusting the forks of the fork lift before lifting the machine. Make sure the machine is safe to lift
- Lift the machine with the forklift, from the front of the machine (opposite to the electrical box). Check for components hanging under the machine before lifting because it may cause machine to fall.
- Always lift the machine by placing the forks of the truck between the two free casters of the machine; never lift it by the ends or extensions.
- Always take the utmost care when carrying out lifting and moving operations.
- Approximate Weight of the machine:100kg or 200 lbs.
- Before installation, remove the pallet under the machine then place the machine down for installation.

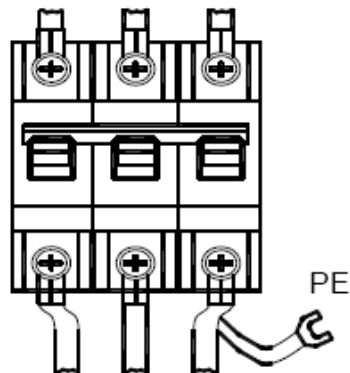
3. ST-10 SPECIFICATION



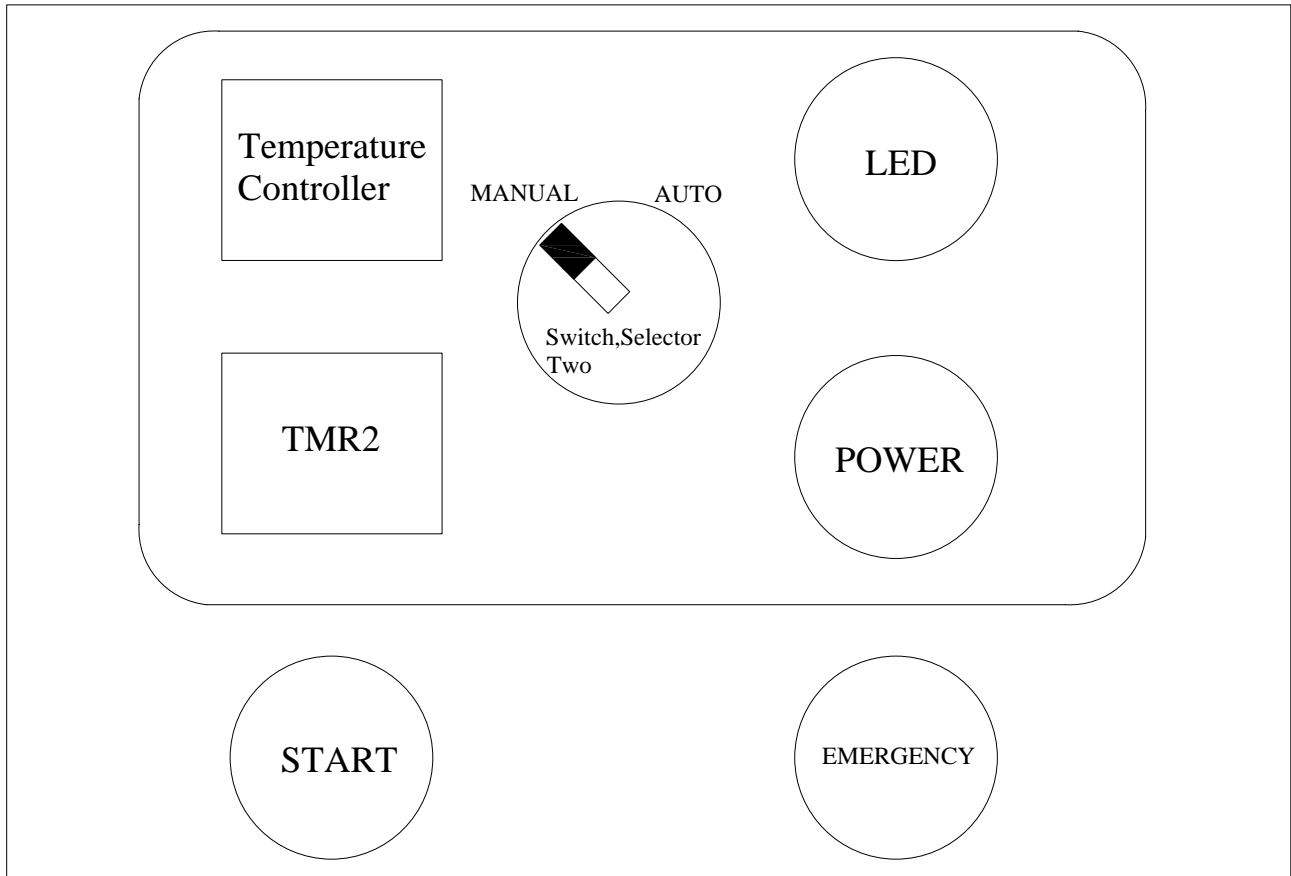
4. INSTALLATION

PLUG-UP POWER CORD

Before plug-up the power cord make sure you have right power source to hook up the pump.
Please look at the back of the machine for the current requirement.



5. OPERATION



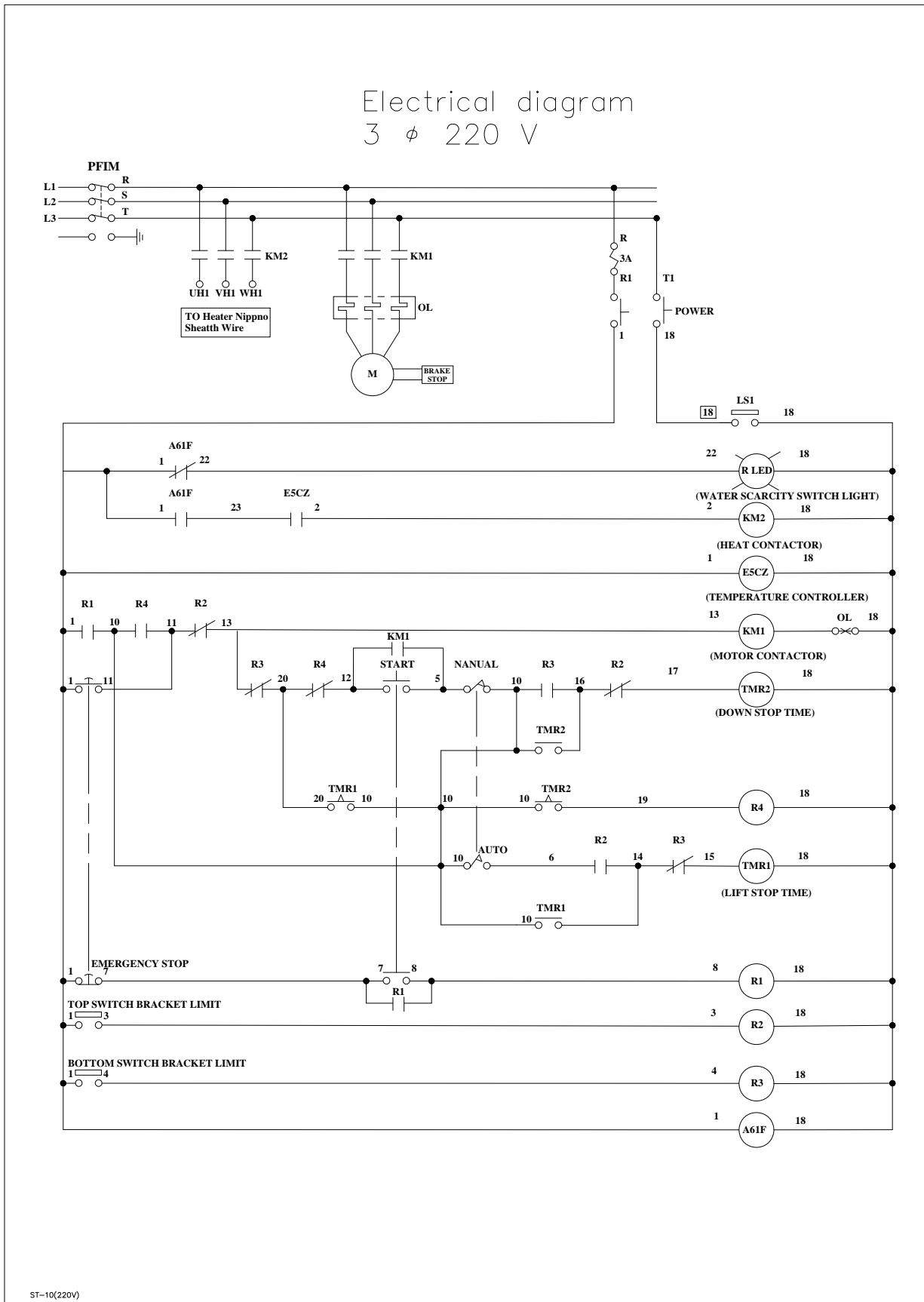
- 1、Led—Lamp,indicator.
- 2、Power—Electrical ON/OFF
- 3、Emergency—push this button to stop the operation.
- 4、Switch,Selector Two—Automatic or manual operation switch.
- 5、Temperature Controller—Set the temperature according to the material of film and its thickness. More detail information controller please refer to the user's manual.
- 6、TMR2—this timer is to control the dipping time.
- 7、START—push this button to start the operation.

6. MAINTENANCE

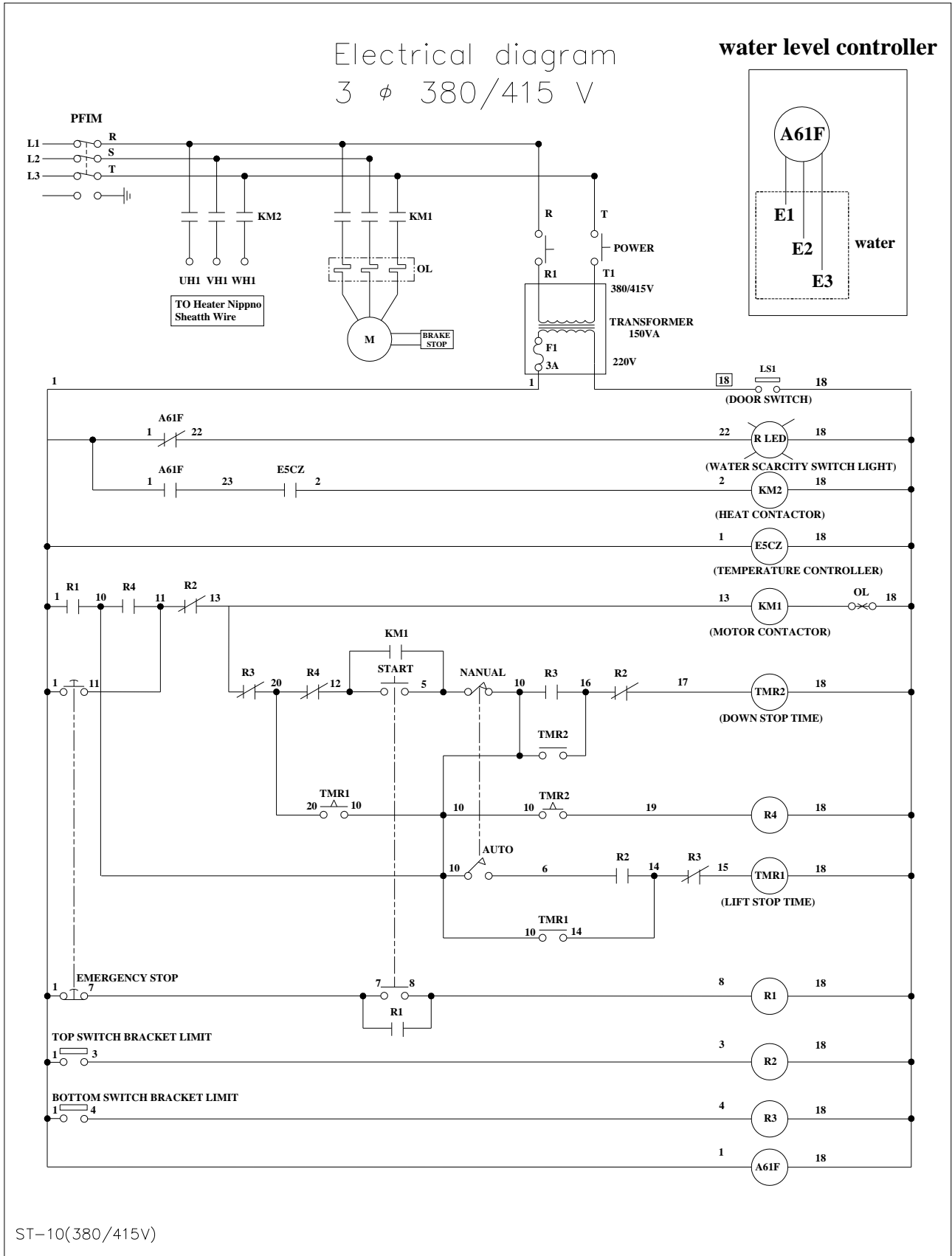
DAILY MACHINE CLEANING

The hot water shrink tank should be cleaned every day. We recommend cleaning by hand with a mild detergent. Do not directly hose down machine.

7. EXELECTRICAL DIAGRAM



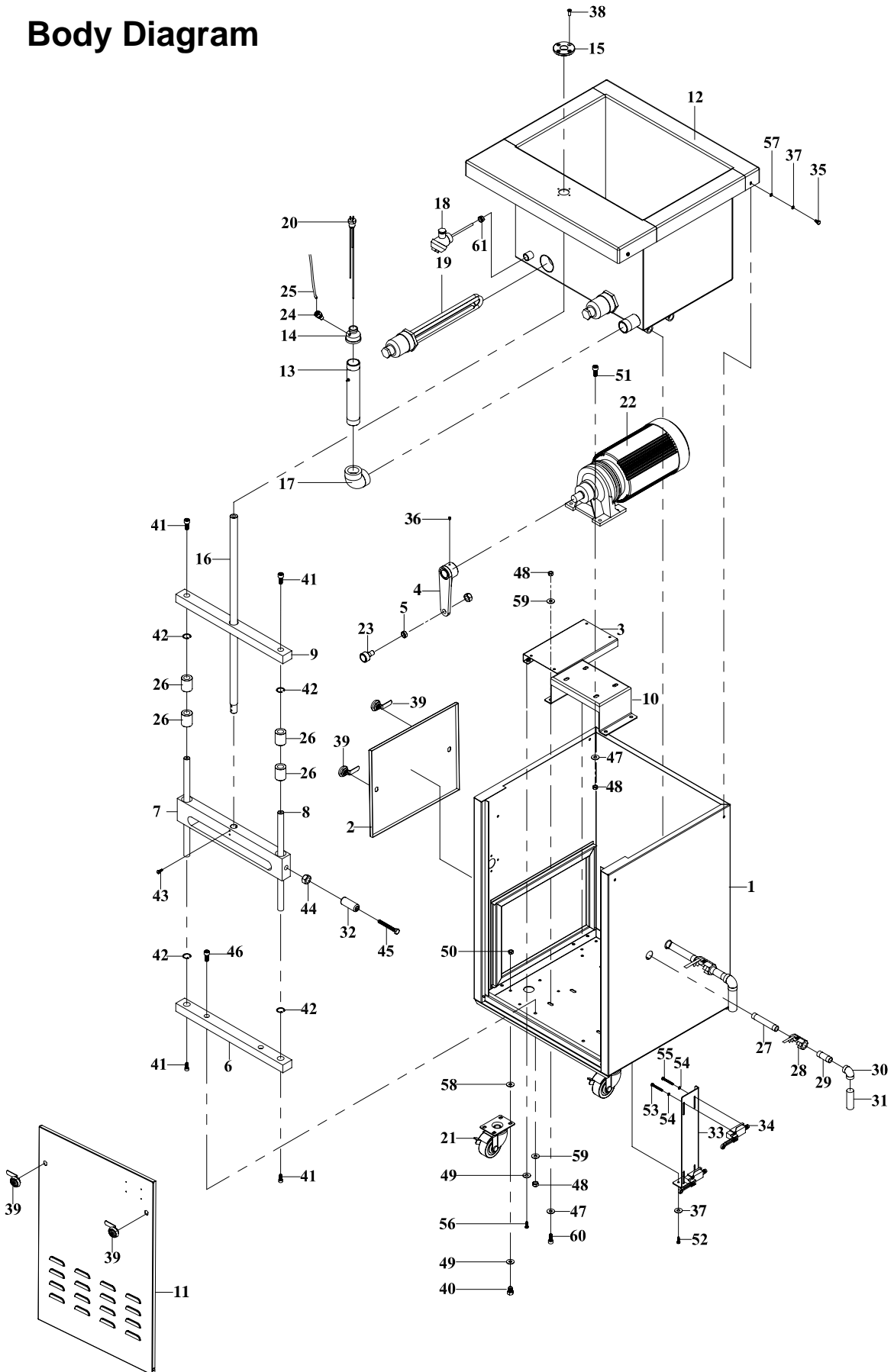
7. ELECTRICAL DIAGRAM



8. FABRICATION

8.1 BODY

Body Diagram

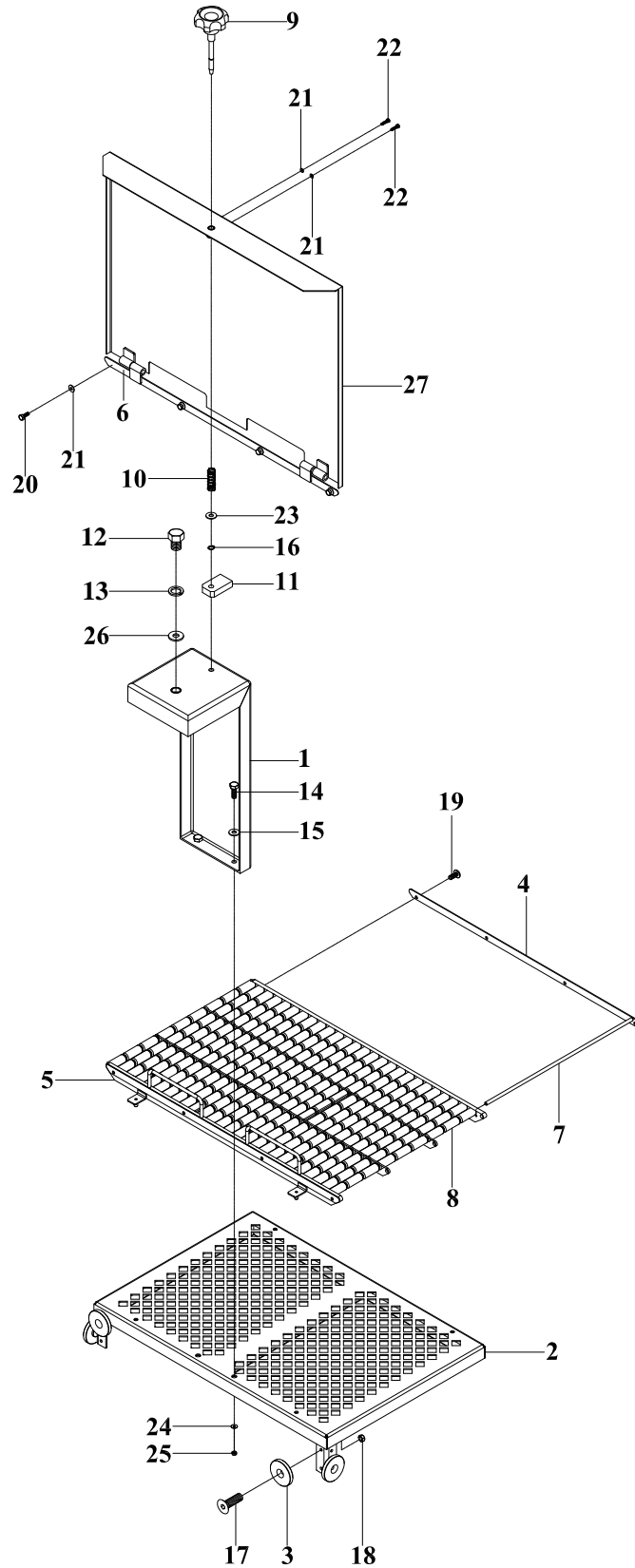


ST10100000

NO.	PART NO.	DESCRIPTION	QTY	NOTE
1	ST10101002	Frame	1	
2	ST10102003	Plate , Frame Rear Cover	1	
3	ST10103002	Mount, Electrical Box	1	
4	ST10104000	Arm, Lifting Up	1	
5	ST10105000	Bushing	1	
6	ST10106000	Mount, Guide	1	
7	ST10107000	Plate, Lift Guide	1	
8	ST10108000	Guide	2	
9	ST10110000	Top Fixed Plate	1	
10	ST10111000	Bracket, Motor	1	
11	ST10112001	Plate, Rear Side Cover	1	
12	ST10113000	Trough	1	
13	ST10114000	Tube, Water Check	1	
14	ST10115000	Turn Connector 1-1/4 x 1/2	1	
15	ST10116000	Block, Guide	1	
16	ST10117000	Shaft	1	
17	274000673	Turn Connector PT 1-1/4	1	
18	2856023	Thermal ψ 6.35x100mmLx PT 1/4	1	
19	2856024	Heater nippno Sheath Wire 5KW 220V/380V	2	
20	2732027	Level Electrode Holder ψ 25(PS-31)	1	
21	2712145	Caster, 2-1/2	4	
22	27131215	Reducer, Motor w/Brake LK-SH 1/4HP 1/100	1	
23	2728816	Bearing, Cam CF16	1	
24	29090311	C Type Adapter VSC - 8 x 1/8	1	
25	2931028	PU Air Hose	1	
26	ST10119000	Bearing, Linear	4	
27	29093279	Nipple 1/2 x 4 (S)	2	
28	29093277	Fitting 1/2 (S)	2	
29	29093265	Nipple 1/2 x 70mm (S)	2	
30	274000673	Elbow 1-1/4 (S)	2	
31	29093278	Nipple 1/2 x 30 (S)	2	
32	ST10208000	Roller	1	
33	ST10118000	Bracket, Limit Switch	1	
34	2853215	Switch, Limit TZ-8108	2	
35	2701153	Screw, Round Hd Socket M6x20 (S)	4	

8.2 WORKING BED DIAGRAM

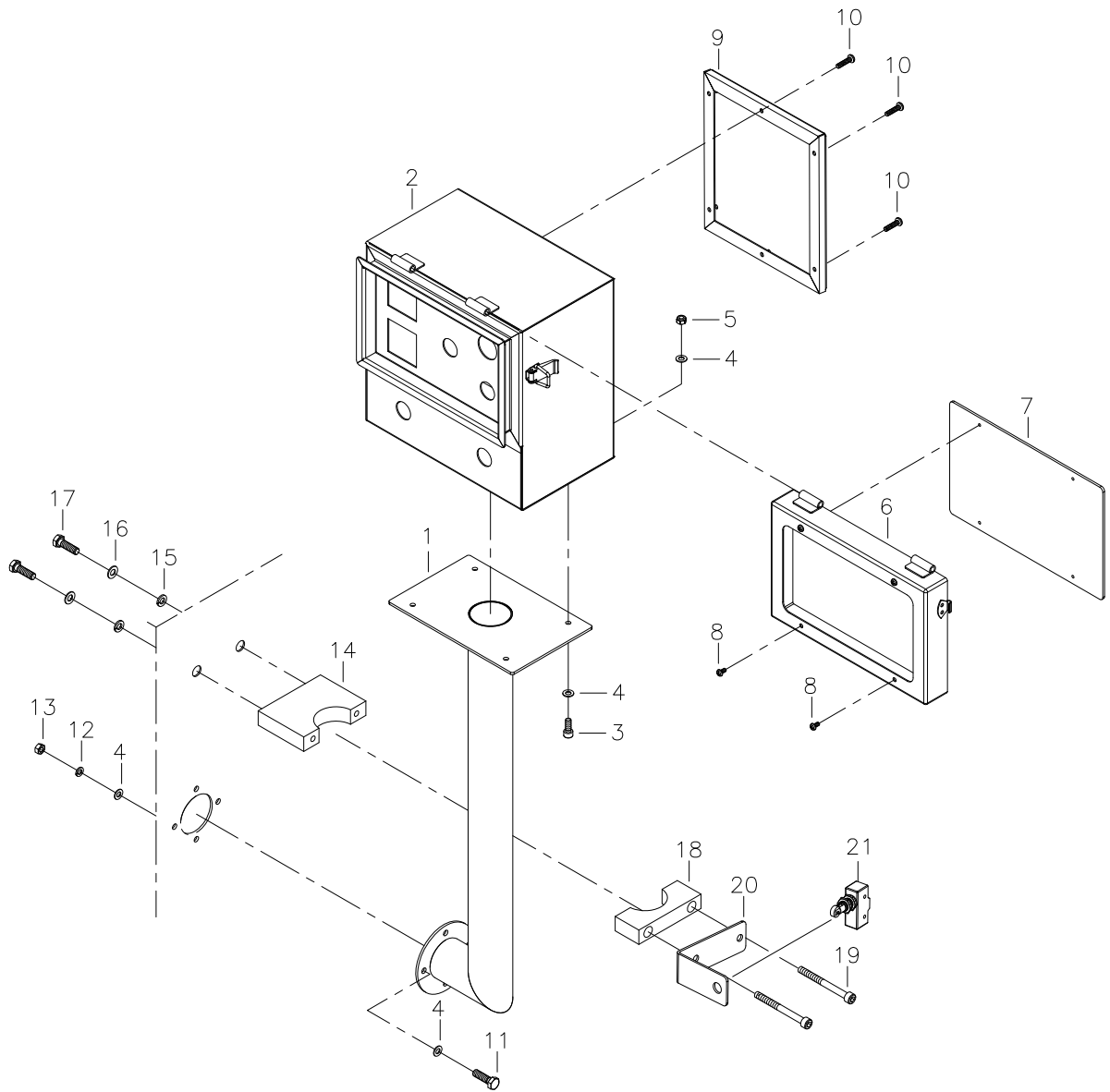
Working bed Diagram



ST10200000

8.3 OPERATOR BOX

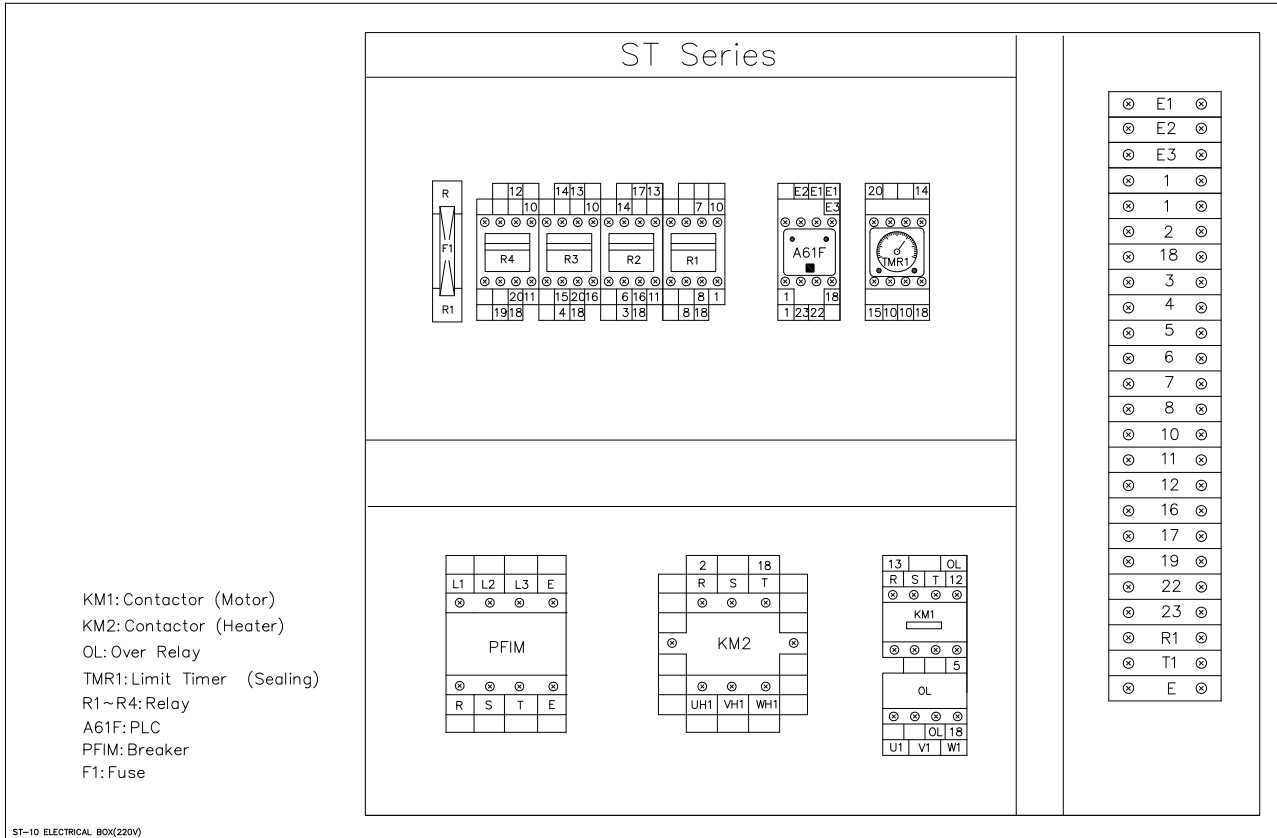
Operator Box



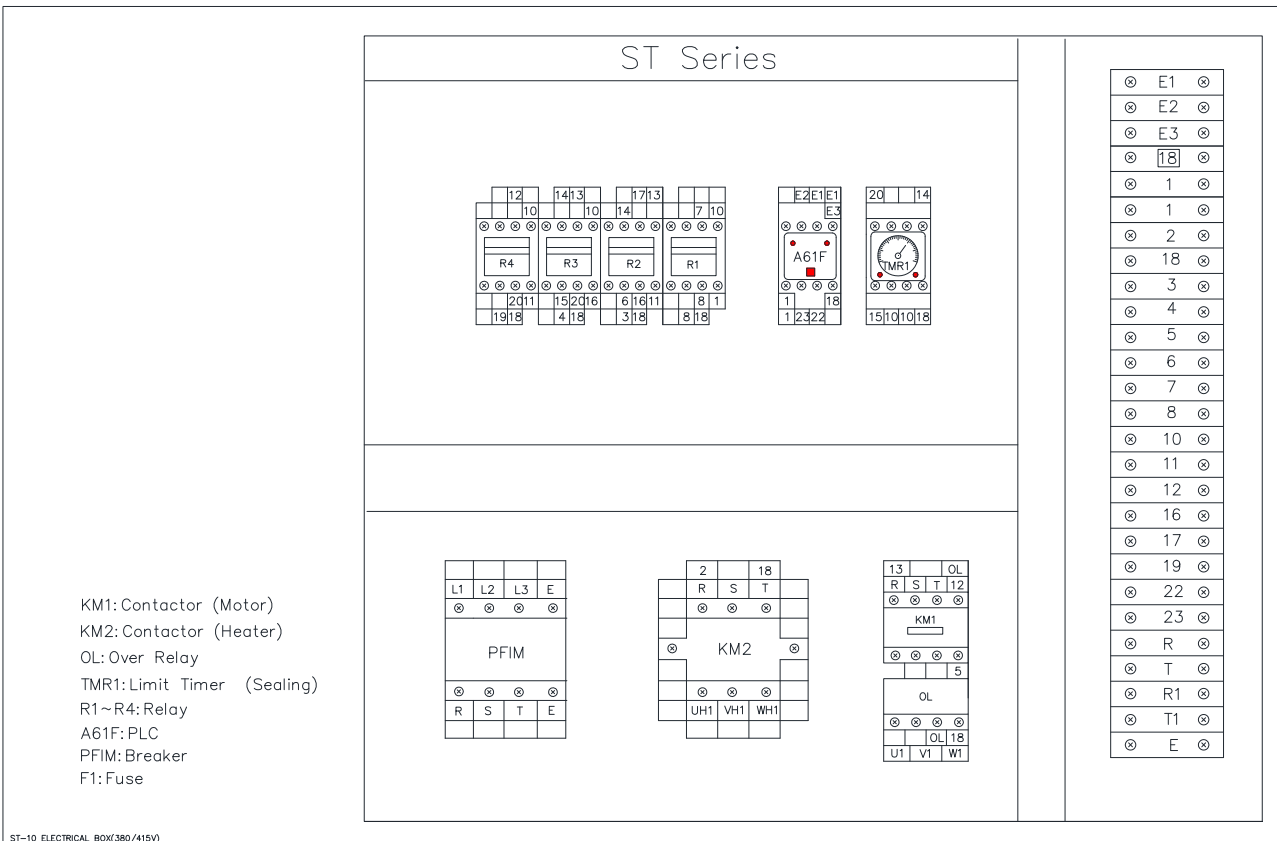
ST10300000

8.4 ELECTRICAL BOX

3 φ 220V 50/60Hz



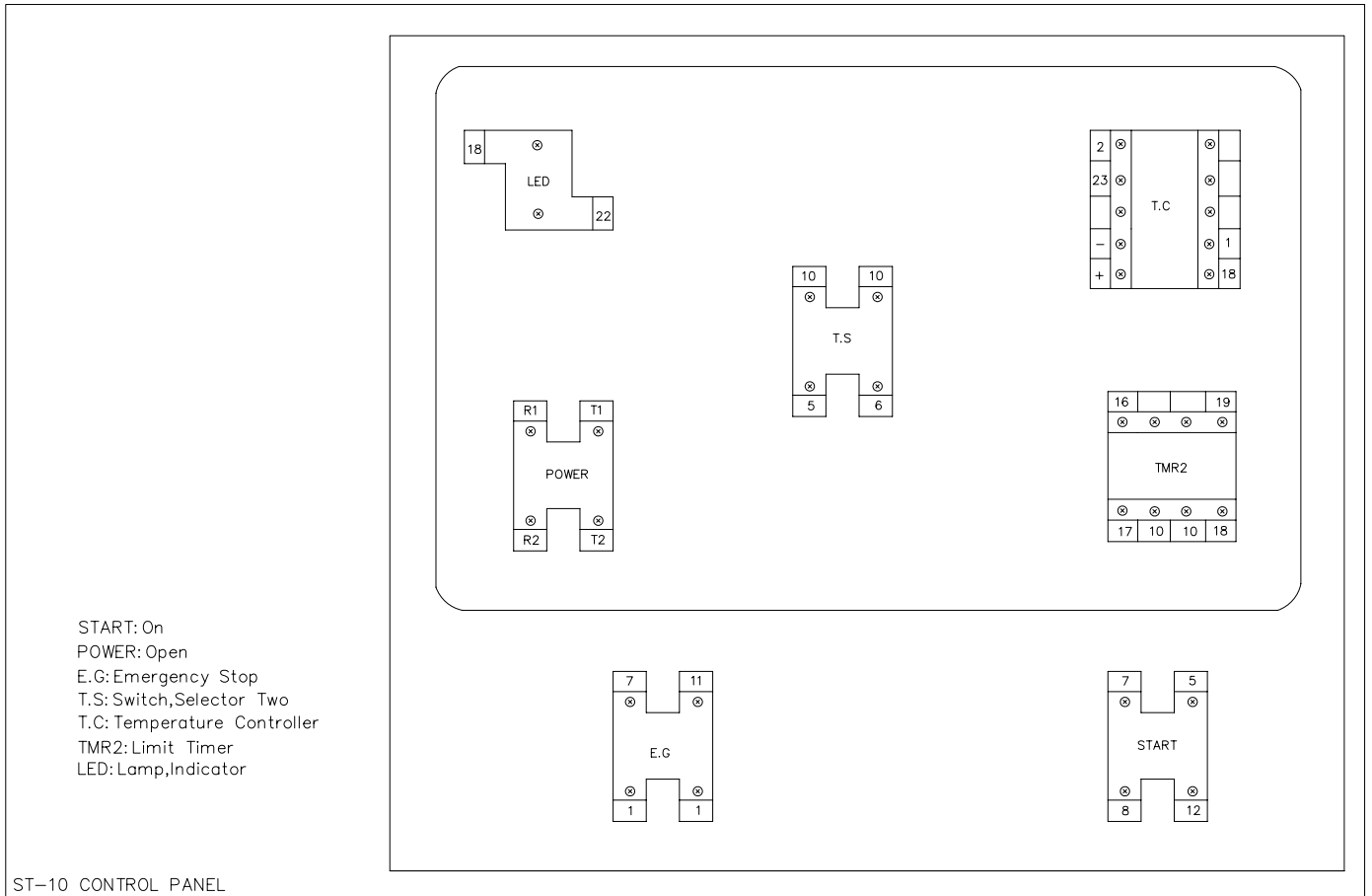
3 φ 380V 50/60Hz



8.4 ELECTRICAL BOX

ITEM	PART NO.	DESCRIPTION	SPECIFICATION	Q'TY	NOTE
KM1	2810764	Contactora	TECO CN-11(220V)	1	
KM2	2810765	Contactora	TECO CN-50R(220V)	1	
OL	2811528	Overload Relay	TECO RHU-10K1 (1.1~1.6A)	1	
F1	2890042	Fuse	30mm 5A	1	
R1~R4	2810271	Relay	RU4S-C-A220	1	
	2831106	Socket, Relay	SY4S-05D	1	
TMR2	2832020	Time Relay	GE1A-B 220-240V/AC	1	
	2833202	Socket Relay	PF-085A	1	
A61F	2823421	PLC	A61F-GP-N 220V	1	
	2831202	Socket Relay	PF113A	1	
PFIM	2801006	Breaker Moeller	N17066/F1-4-63-0.03	1	
TB	2843212	Terminal Block	PTU-10	26	
	2843207	Plate Terminal Block	SBN-20(TA-002)	2	
T1	28960031	Transformer	380V/220V 150VA	1	
BOX	ST10800000	Electrical Box		1	

8.5 CONTROL PANEL



ITEM	PART NO.	DESCRIPTION	SPECIFICATION	Q'TY	NOTE
START	2870067	Switch Screw (Green)	(YWIB-MIE20G)	1	
POWER	2870048	Switch Screw (Green)	YW1B-A1E20G	1	
E.G	2870066	Screw (Red)	YW1B-A4E11R	1	
T.S	2871119	Switch Selector Two(1A.1B)	YWIS-2111P	1	
T.C	2856022	Temperature Controller	E5CZ-R2 (AC100-240V)	1	
	2832022	Socket Relay (Y)	Y-50 (48*48)	1	
TMR2	2832020	Time Relay	GE1A-B 220-240V/AC	1	
	2832021	Socket Relay	P3G-08 ANLY	1	
LED	2872502	Lamp Indicator (Red)	SCR-3041 220V	1	